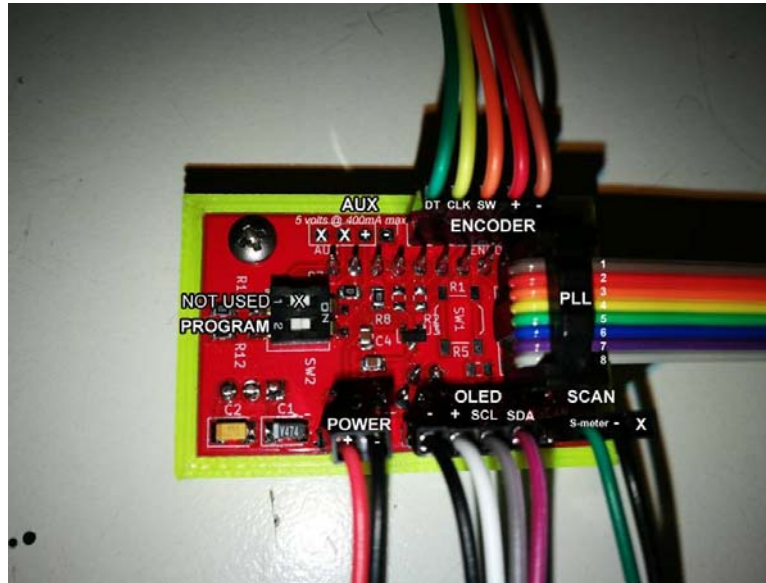
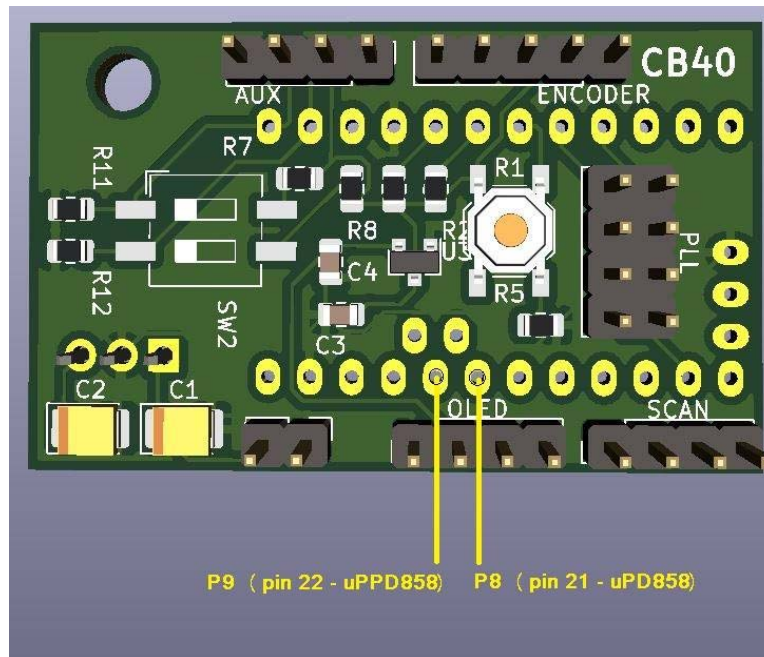


CB40 & CB40A Pin outs

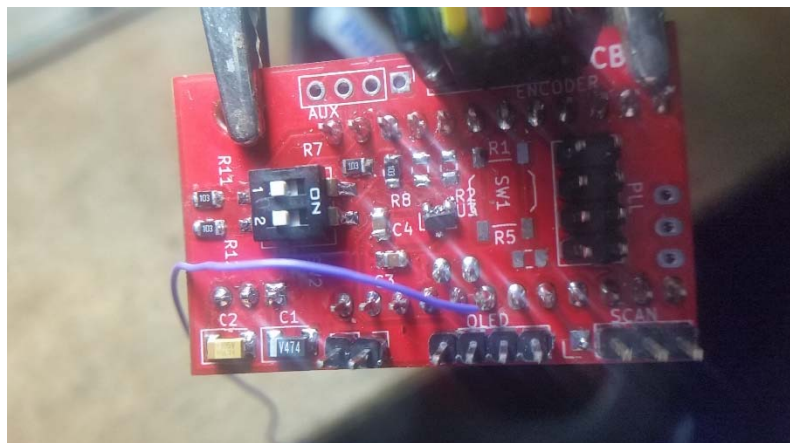
PLL02A, UPD2824, UPD858, MB8719



the 9th wire for the UPD858

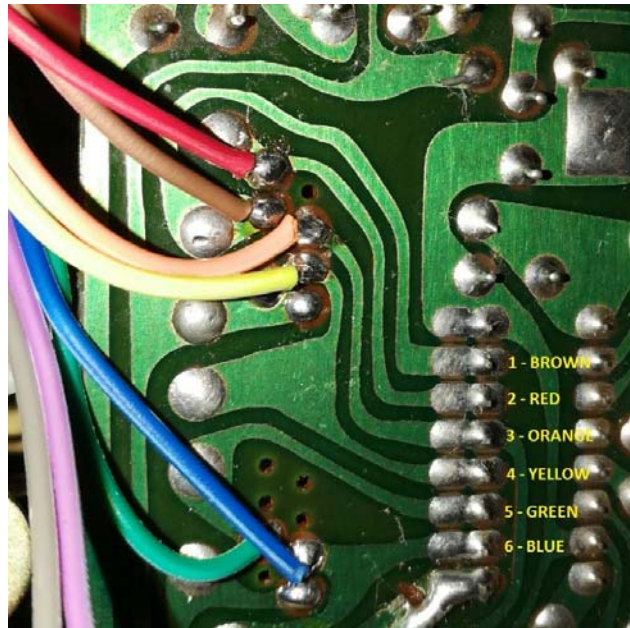


you only need to use P8 on the CB40 and solder it to pin 21 on the UPD858 PLL.



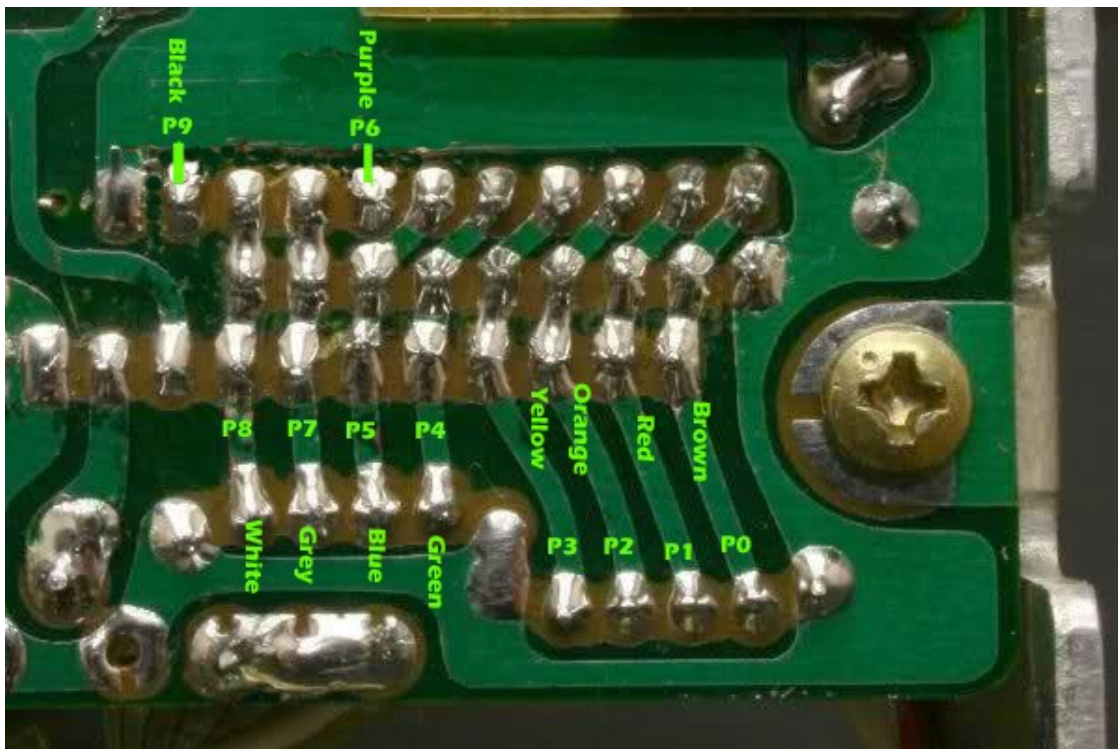
PLL02A/G

wires 7, 8, P8, P9 not used or needed for this pll

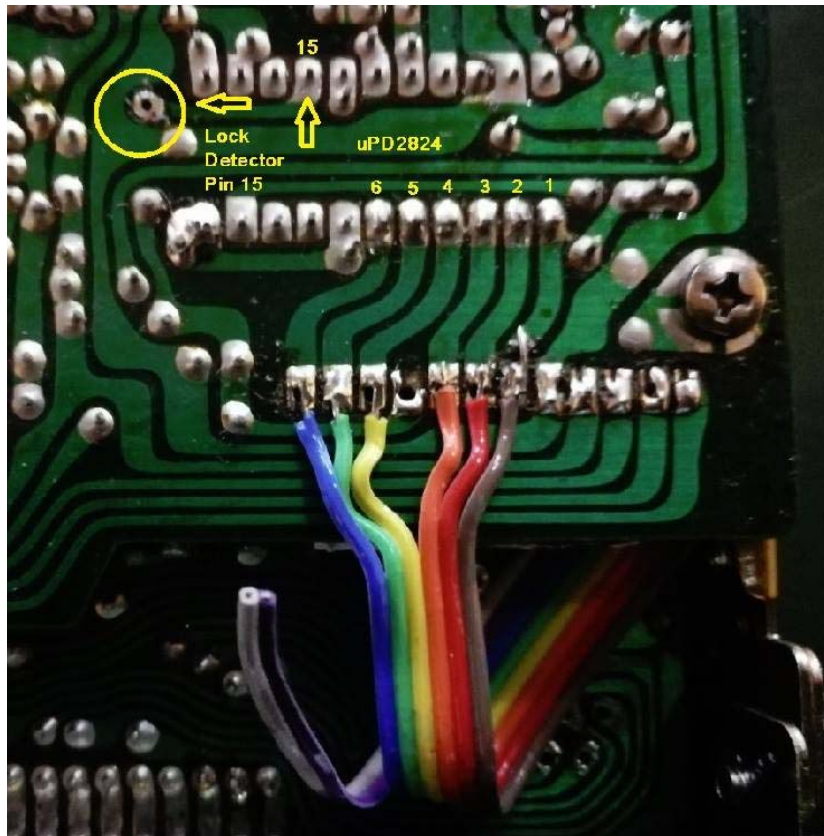


UPD858

Need to use P8 from the cb40 to P8 on the photo below on the 858 pll
a side note P9 isnt really needed at this time

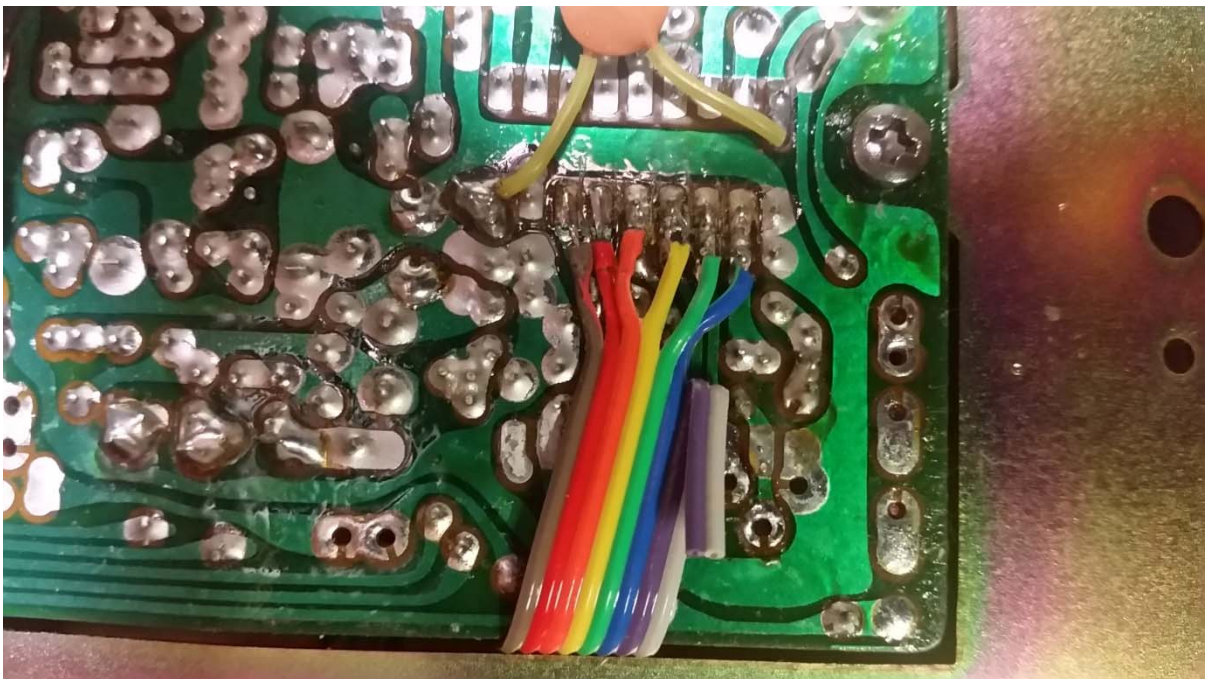


UPD2824



Notice Pin 15 it has to have the trace cut, this is the lock detect, you must cut it so the cb40 will work, wires 7, 8, P8, P9 not used or needed for this pll

MB9719



notice wires 7, 8, P8,P9 are not used or needed for this pll.

For more info please use www.cbria.com, and look in the forum for other how toos and FAQ and install PDF's



Read this install in full first before you even attempt to do this mod

You take on the risk of fucking up and that's all on you, the person that made this install is not liable for your radio being a boat anchor or a paper weight.

Also if you think this is above your capability's best you get a tech, someone like Ray from Razor Radios in Queensland ???.

